

# 211 Arctic

Standardowa powierzchnia nadruku

Standard printing area

SCALE  
1 : 1

kalka jedno / dwustronnie

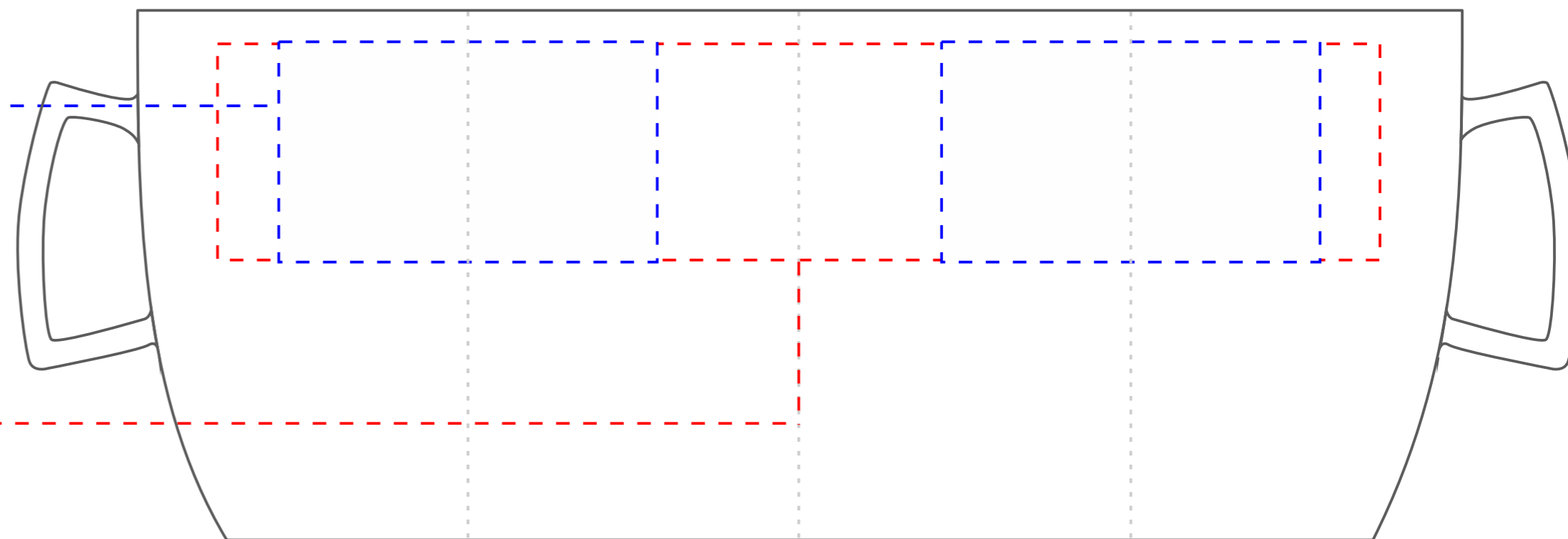
decals one side / both sides

kalka wpokół kubka

decals around the mug

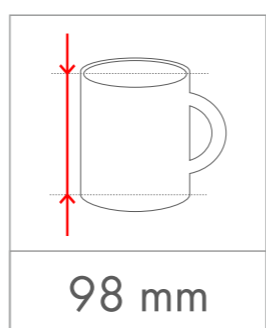
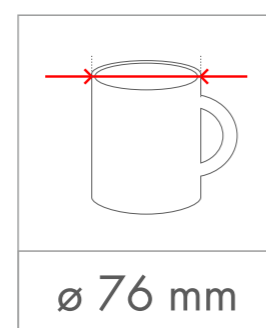
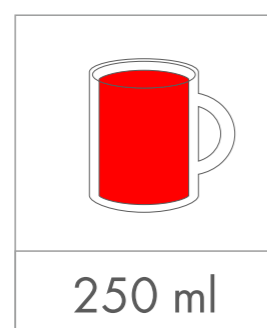
70 x 40 mm

215 x 40 mm



wymiary kubka

dimensions of the mug



additional print areas

additional print areas



Jak przygotować plik do druku

How to prepare file to the print

projekt wektorowy

vector design

typ pliku cdr | pdf | eps | ai

file type cdr | pdf | eps | ai

kolory Pantone

Pantone colours

teksty zamienione na krzywe

text converted to the curves

minimalna grubość linii - 0,2 mm

minimum line thickness - 0,2 mm

projekt rastrowy

raster design

typ pliku tiff

file type tiff

rozdzielczość 300 dpi

resolution 300 dpi