

kalka jedno /
dwustronnie

70 x 50 mm

decals one side /
both sides

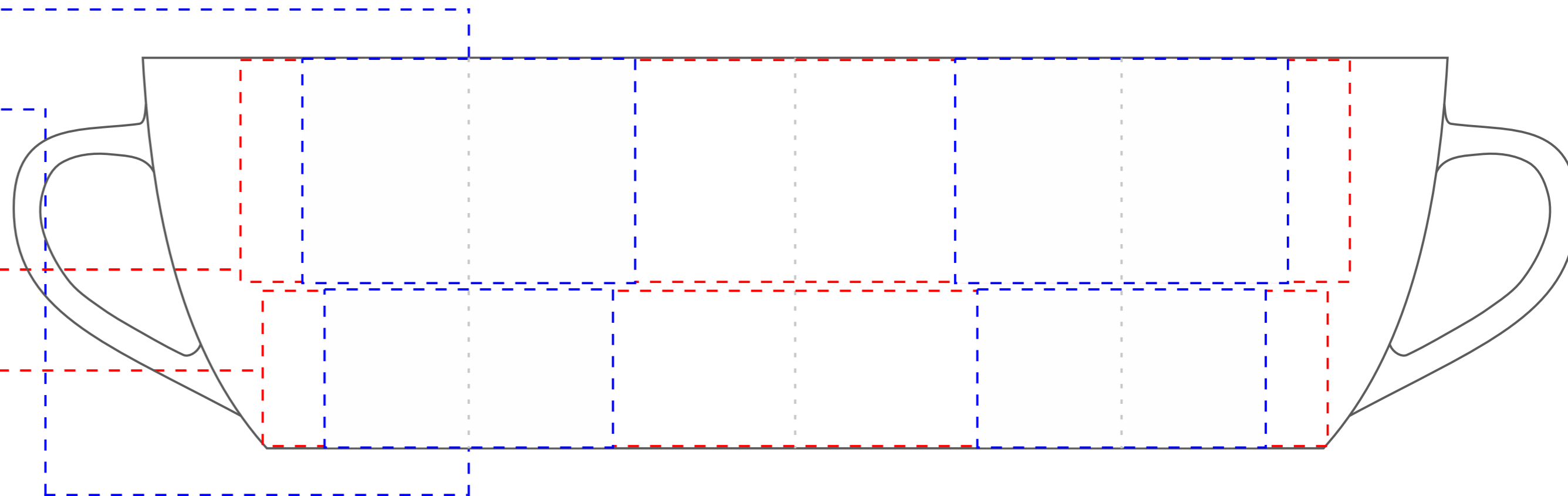
65 x 35 mm

kalka
wokół kubka

250 x 50 mm

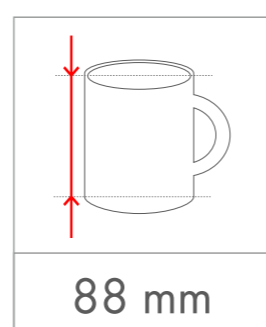
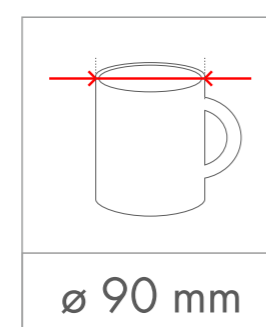
decals around
the mug

240 x 35 mm



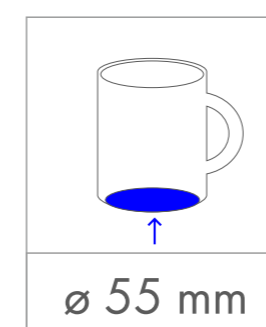
wymiary
kubka

dimensions
of the mug



dotychczasowe
pola nadruku

additional
print areas



Jak przygotować
plik do druku

How to prepare
file to the print

projekt
wektorowy

vector
design

typ pliku
cdr | pdf | eps | ai

file type
cdr | pdf | eps | ai

kolory
Pantone

Pantone
colours

teksty zamienione
na krzywe

text converted
to the curves

minimalna grubość
linii - 0,2 mm

minimum line
thickness - 0,2 mm

projekt
rastrowy

raster
design

typ pliku
tiff

file type
tiff

rozdzielczość
300 dpi

resolution
300 dpi